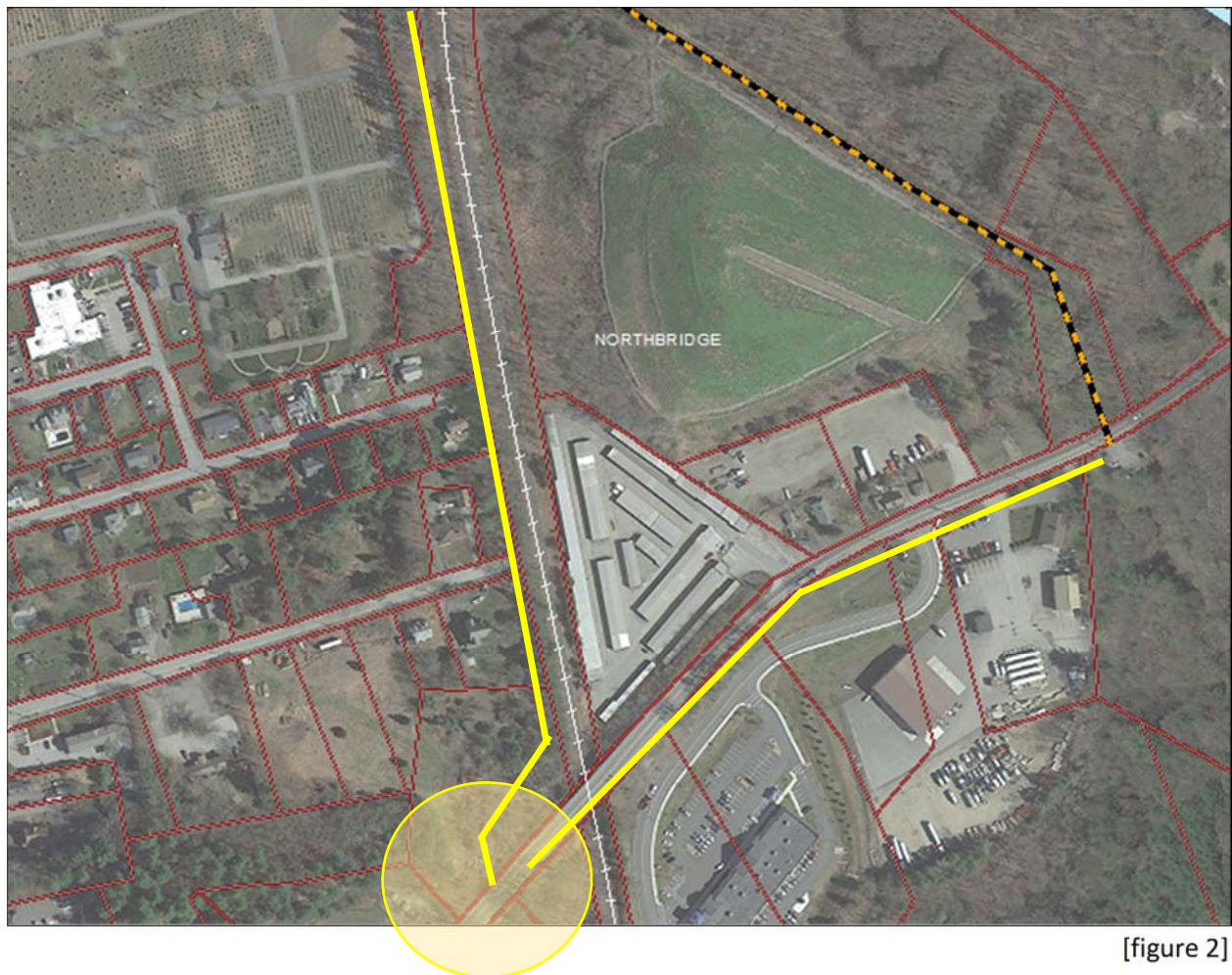


[figure 1]

Plummer's Landing (Church Street Ext)

**Option 1** -utilize existing towpath, along capped land fill area; concern w/ at-grade rail crossing

**Option 2** -to avoid at-grade rail crossing, align path along westerly-side of rail to Church Street Ext bridge; use roadway to crossover rail; not ideal, would need to share roadway through to Plummer's Landing south to Uxbridge (DCR land, etc.)



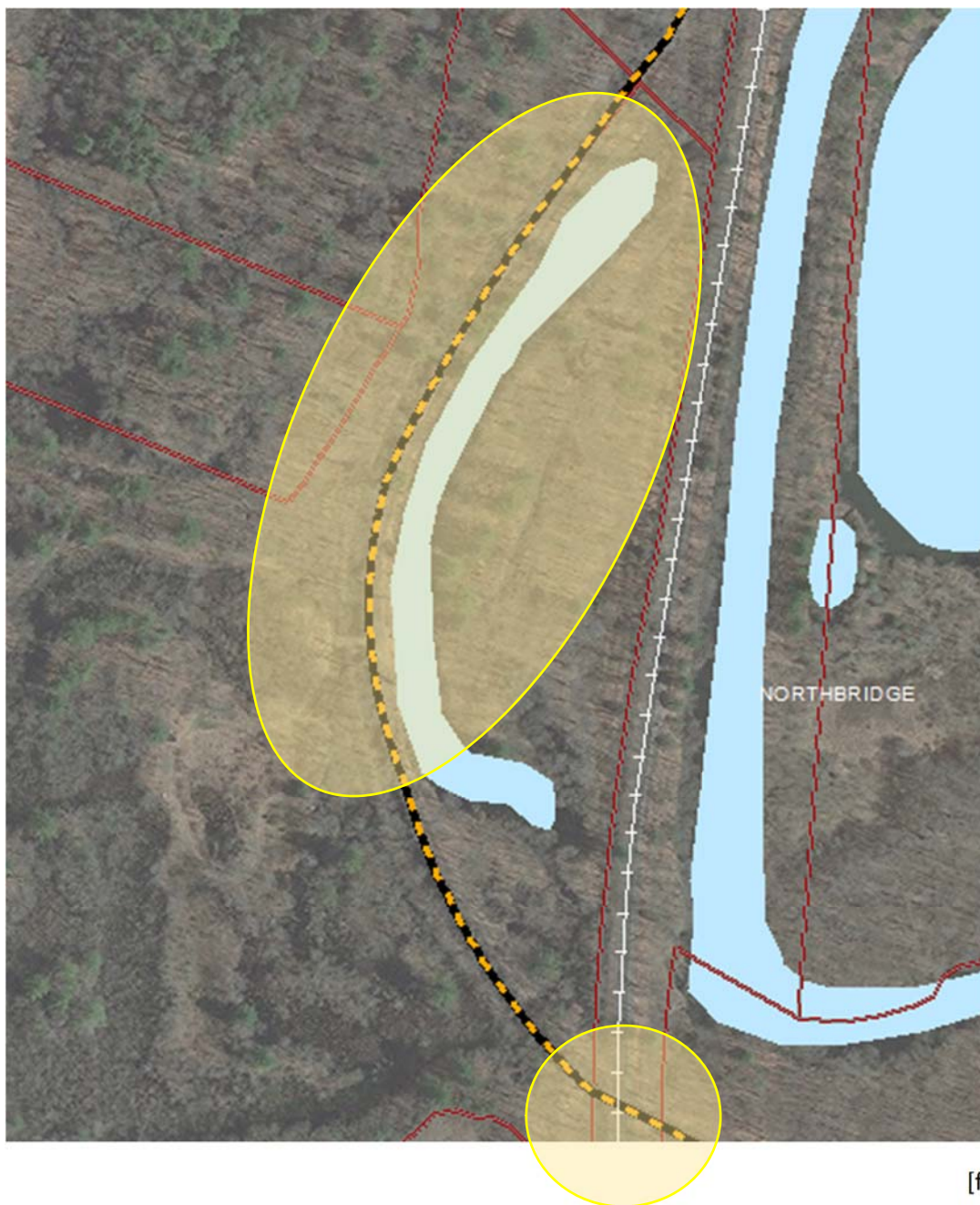
[figure 2]

### Church Street Ext

-see figure 1 Option 2

will need to analysis sight distance along Church Street to confirm; roadway grade elevates over RR may not be good sight distances for roadway crossing





[figure 3]

-continuation of figure 1 North

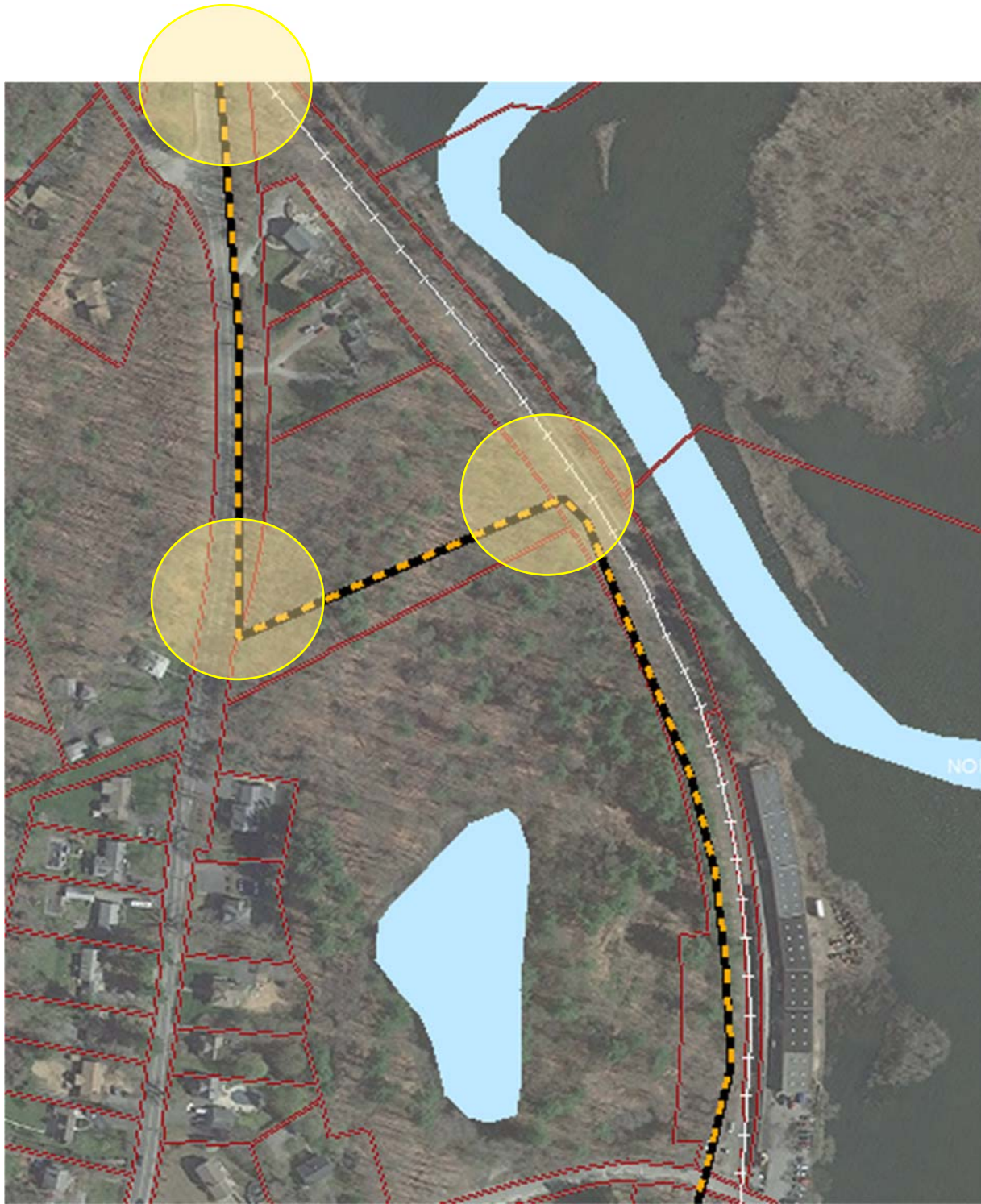


[figure 4]

### Riverdale Street / Riverdale Mill

-May be opportunity to establish/dedicate path as part of future site development options



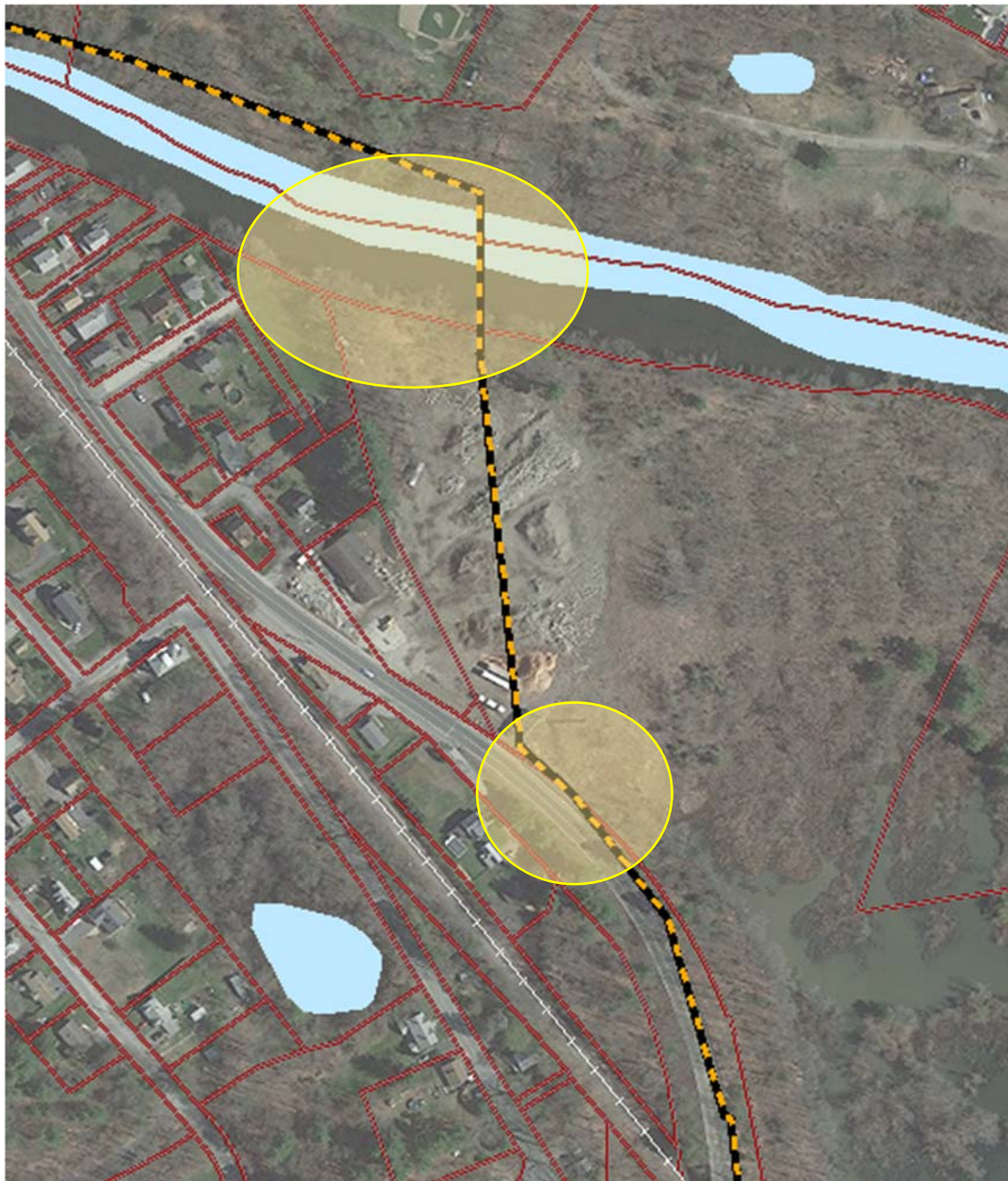


[figure 5]

-continuation of figure 4 North of Riverdale Street/Riverdale Mill

-path would travers through private property (N/F Knott) to Providence Rd/Rt 122

-purpose of would be to cross over railroad utilizing RT122 bridge (on road)



[figure 6]

### 2040 Providence Road

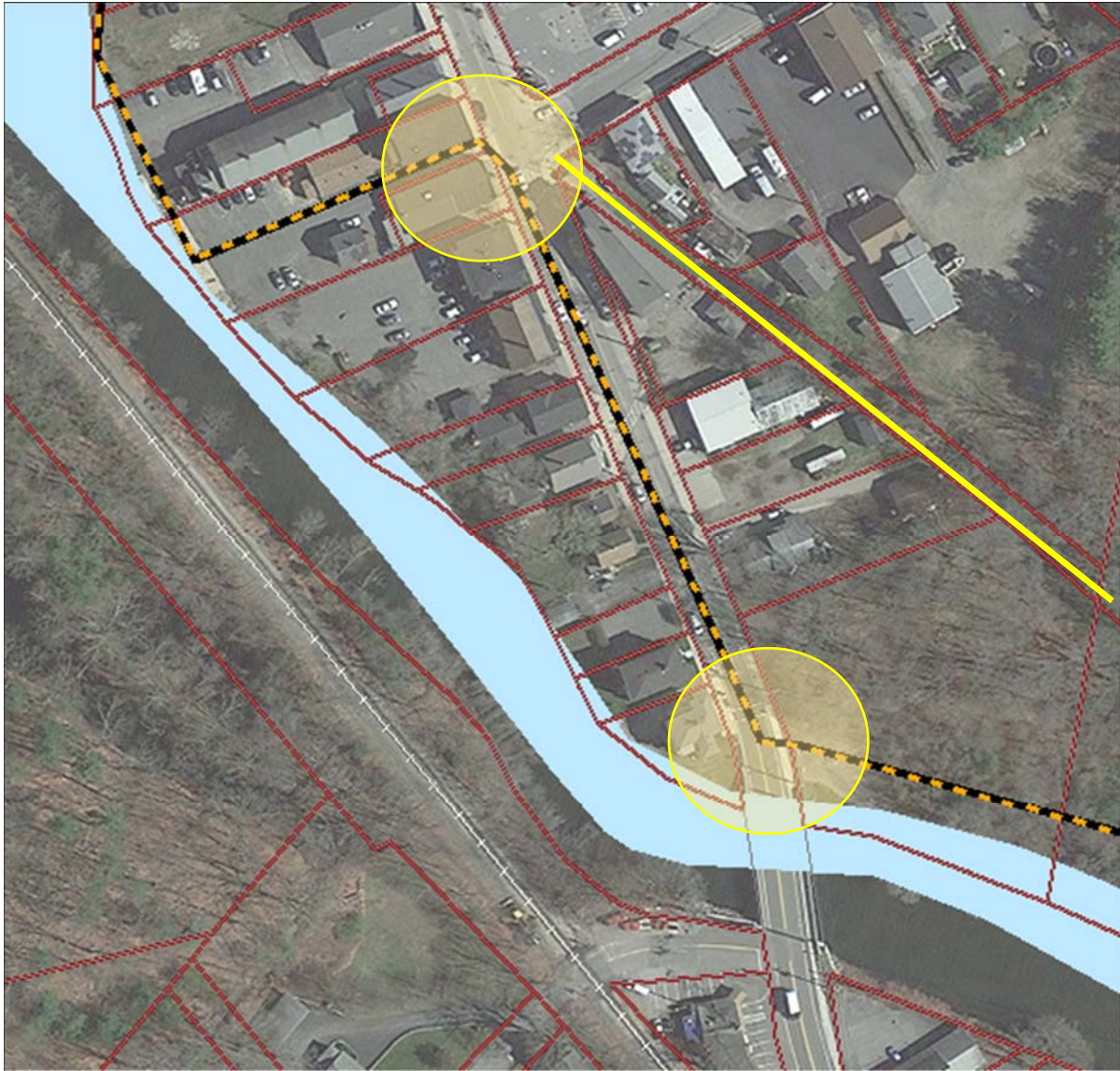
- former auto salvage yard, under ACO will need to work w/Town as part of any future site (re)development; could include a trailhead parking area
- there may be an old abutments (remnants) to create a bridge crossing





[figure 7]

-after crossing river utilize easement area (sewer) through to Providence Rd/RT  
122 Rockdale center

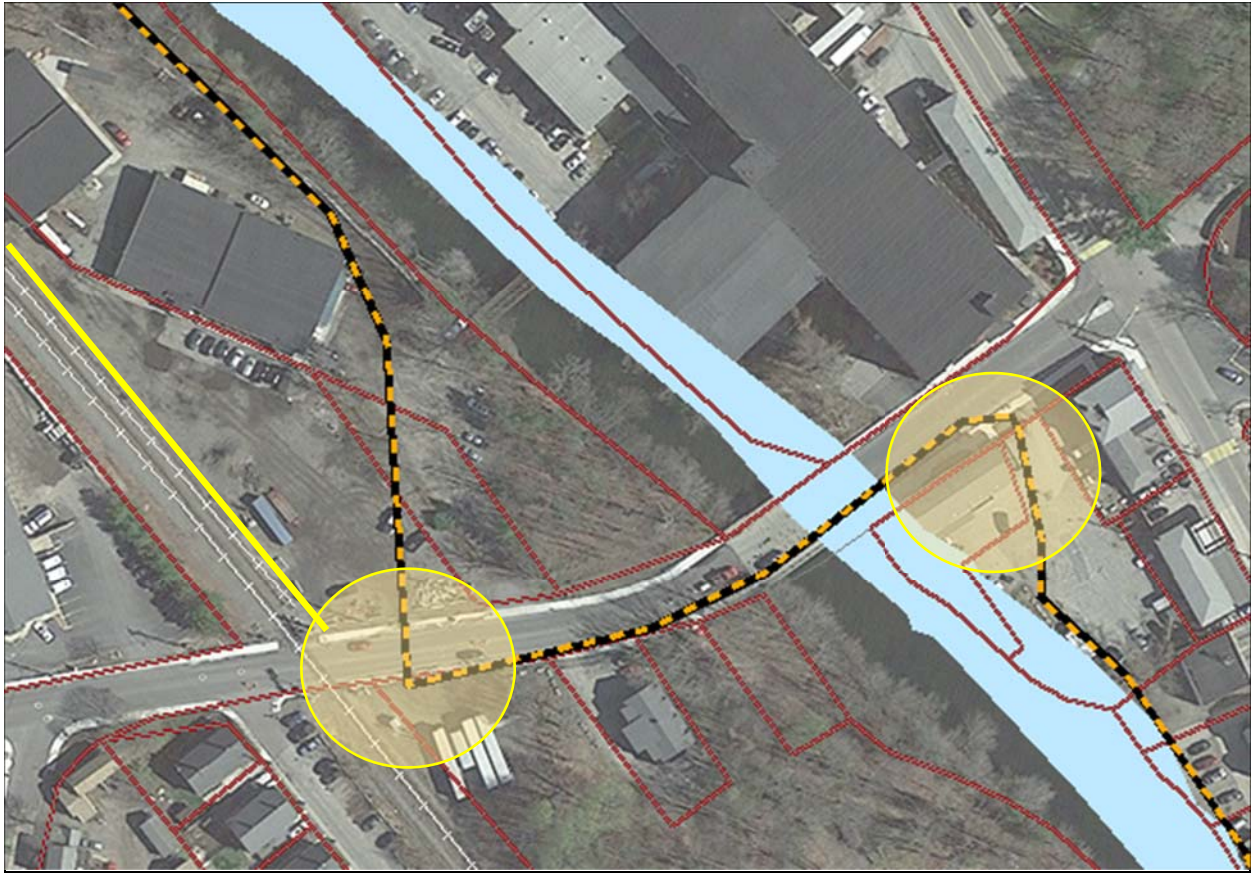


[figure 8]

**Option 1** -utilize easement area behind properties (may be an old streetcar easement?)

**Option 2** -on road north to the site of the former RYC (demo'd) now town-owned path could extend along back of properties along Blackstone River -through to Sutton Street bridge

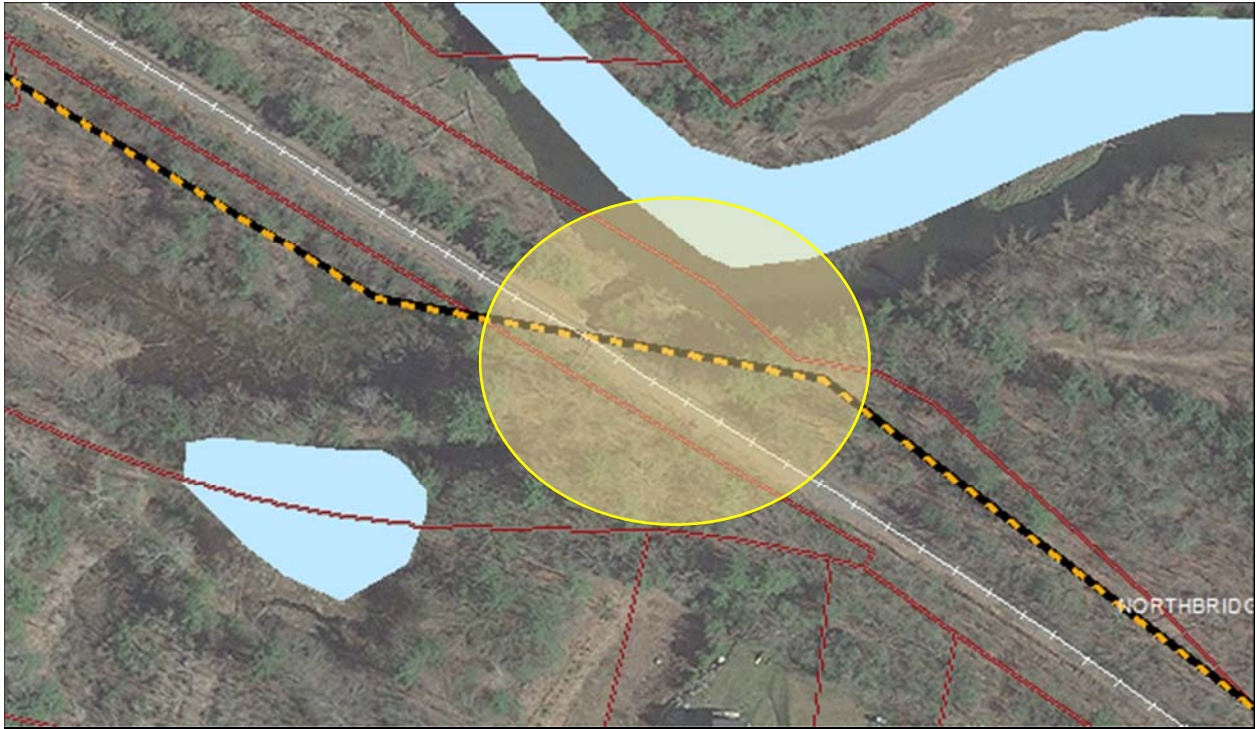




[figure 9]

### Sutton Street Bridge

-opportunity to incorporate a trailhead parking area just off Sutton Street, at the location where bike path would cross Sutton Street & travel either along RR or behind buildings



[figure 10)

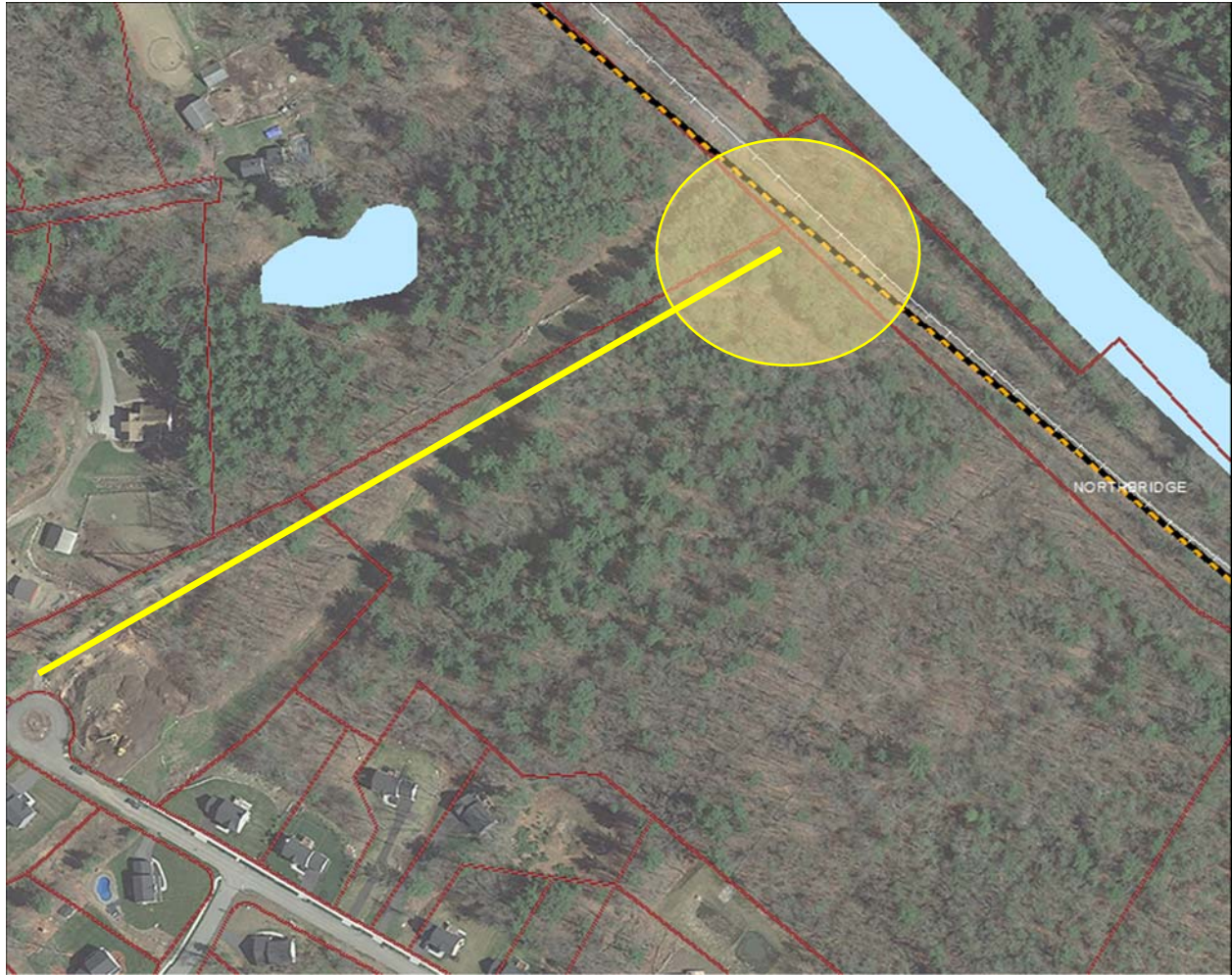
-from Sutton Street Bridge area; bike path extends northward, however needs to crossover the rail at some point (to the west-side)

**Option 1** -utilize **existing culvert (?)**

**Option 2** -not clear

*\*Justin provide me with some narrative description of what this is, etc. and your thoughts how we could use it to cross*

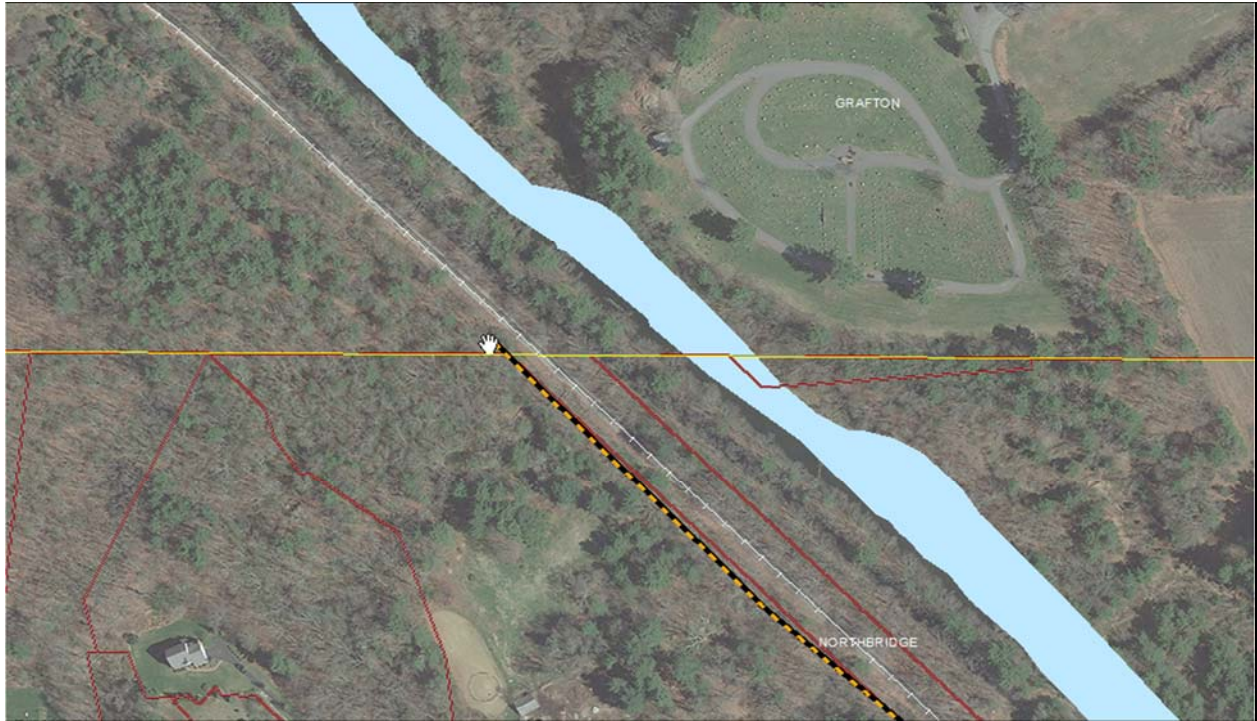




[figure 11]

### Presidential Farms, Subdivision

continuing north, after crossing rail (under?); opportunity to connect with existing bike/walking path system w/in President Farms residential subdivision where a bikeway is already constructed (land recently conveyed to MetaComet Land Trust); likely would be willing partners to support regional efforts



[figure 12]

Grafton town-line

continuing north from Presidential Farms neighborhood through to Grafton