

What is Pollination?

Pollination is the act of transferring pollen from a male plant's anther to a female plant's stigma. This is the first step in plant reproduction as well as the production of fruits and seeds. This can happen in different ways, such as self-pollination and through the outside aid of Pollinators.

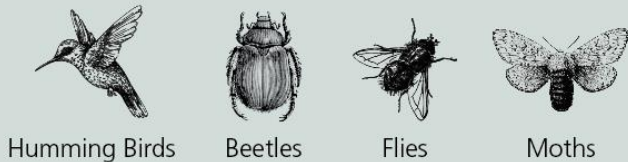
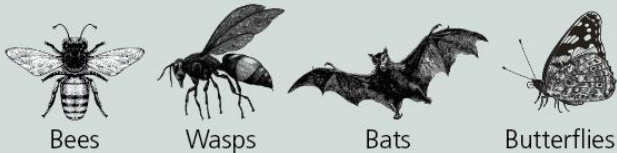
Why are Pollinators important?

Without the aid of these pollinators, we would not be able to enjoy many of the products we use today. Out of all plants used for food, beverages, medicines, spices, and fabrics an estimated 75% are pollinated by animals or insects. In fact, about one out of every three bites of food we ingest comes directly from a pollinator.

What do Pollinators do?

Pollinators are wildlife species that feed off the pollen and nectar of plants. In this process they play a crucial role in transferring pollen from plant to plant, aiding in plant reproduction.

Who are Pollinators?



Other Small Animals



Turning a Kitchen Garden into a Pollinator Garden

Industrial waste made the Blackstone one of the most polluted rivers in America. Some of that pollution remains buried in the riverbed. During floods, the rushing water stirs up the sediment releasing some of the pollution. The rising waters then carry the pollution to new areas where it settles. This park is in the Blackstone River's floodplain and has flooded over several times.



Originally, this was the site of a kitchen garden for the Kelly House. However, the pollution in the soil can get into any food grown here. To prevent anyone getting sick from eating anything grown here, we turned it into a pollinator garden. This allows us to still have a garden and provides a much-needed pollination source for the area.



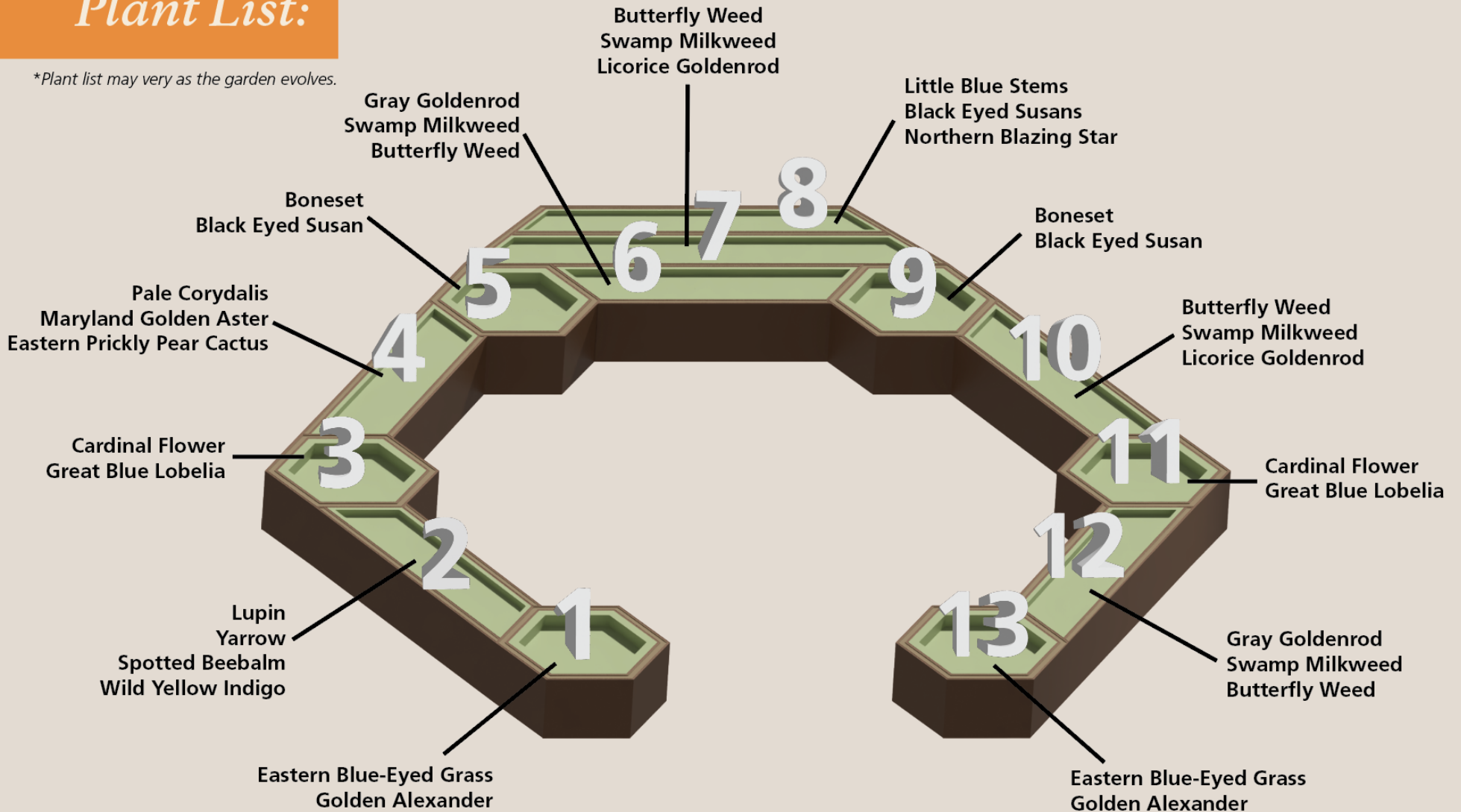
Blackstone River Valley National Historical Park

Pollinator Garden



Plant List:

**Plant list may vary as the garden evolves.*



Why a Pollinator Garden?

In 2014, to assist a diminishing population the President issued a memorandum to create a "National Strategy to Promote the Health of Honey Bees and other Pollinators." To aid in the effort and help our country reach its goal, the National Park Service has made a push to promote the health of pollinators. This and other contributing factors prompted us to create a garden to aid our community and its pollinators.